



rock by rock 

My Mission Log

Stop the Invasion

Name:

Contents

Mission Activities

Engage	1.1 Fact Finder Notes	Pg. 1
Habit	2.2 Build the Tallest Tower	Pg. 4
	2.3 Creativity Superpower	Pg. 5
Explore	3.1 Invasive Species Words	Pg. 6
	3.5 Food Web Clues	Pg. 7
	3.5 Model Ecosystem Mobile	Pg. 8
	3.6 Compare and Contrast	Pg. 9
	3.9 Graph the Impact	Pg. 10
	3.9 Origami Native Species	Pg. 11
	3.11 Ecosystem vs. Invader	Pg. 16
	3.13 Hear More Perspectives	Pg. 20
	3.14 Debate	Pg. 21
Take Action	4.2 Make a Character Profile	Pg. 24
	4.6 Plan Your Comic Book	Pg. 25
	4.7 Outline Your Comic Book	Pg. 26
	4.9 Make Your Comic Book	Pg. 27
	4.10 Share Your Thinking	Pg. 31
Reflect	4.13 Reflect	Pg. 32



1.1 Fact Finder Notes

Your mission is to stop the spread of invasive species. You will do this by creating an original comic book to help teach others about invasive species. You will pick one topic and use this to create your final Take Action Project.

Your mission is to collect information that will help you with your final project. Every time you watch a video, read a text, or do an activity, you should write down new information that you think will help you with your project.

Here are some questions to think about. Anytime you learn new information about one of these questions, write it down.

What does it mean for a plant or animal to become invasive?

2.2 Build the Tallest Tower

Directions: Your goal is to build the tallest tower you can with spaghetti with a marshmallow on top. Your tower must support the whole marshmallow on the very top without falling down.

- **Time:** 18 minutes
- **Materials:** 1 yard of tape (3 feet), 1 yard of string (3 feet), 20 sticks of dry spaghetti, 1 big marshmallow (if you don't have a marshmallow you can use a cotton ball or small ball of clay or play dough).

Rules to remember:

- You can work individually or with a partner or small group.
- The tower must be freestanding. This means that it is able to stand on its own.
- The entire marshmallow must be on top of the tower. No eating or cutting the marshmallow!
- You can use as many of the supplies as you need. You do not need to use all of the supplies.
- You can cut the tape or string and break the spaghetti into smaller pieces.
- When the time is up, you must stop building their tower.

Materials



20 pieces
dry spaghetti



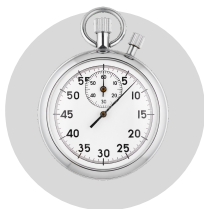
1 yard tape



1 yard string



1 marshmallow



stopwatch



scissors



ruler or
measuring tape



3.1 Invasive Species Vocabulary

Directions: Pick three words you think will be hardest to remember. Draw a picture for each word, label your picture with the word, then use that word in a sentence. **Bonus points** if you can use the word **protect**, **home**, or **new** in one of your sentences. Just for fun.



3.5 Food Web Clues

You are going to make a model of a food web from the natural home of the Burmese python. Before you make your model, your first step is to create a food web diagram. Use the living organism clues in lesson 3.4 to build a food web that shows some of the living things in the Burmese python's natural home. Once your diagram is complete, you'll be ready to start building your model!

Directions:

- **Step 1:** Check out the first clue clue in lesson 3.4. Decide if the species or organism is a plant, prey or apex predator.
- **Step 2:** Write the name of that species in the correct row. For example, if it's a predator, put it in the predator row.
- **Step 3:** Now complete the rest of the clues. For each clue, find out if it's plant, prey or apex predator and write the name of the species in the correct row.
- **Step 4:** Draw arrows to show who eats who. Remember the arrow points to the animal doing the eating.

Southeast Asia Jungle Food Web

Apex
Predators

--	--	--

Prey
(Herbivores &
Omnivores)

--	--	--	--

Plants

--	--	--

End of Preview

If you want to see the rest of the student Mission Log,
sign-up for a free-trial.

rock by rock 